

BBSQ

**BAHAMAS BUREAU OF
STANDARDS AND QUALITY**

QUALITY IS OUR STANDARD

BAHAMAS NATIONAL STANDARD

**Conformity assessment — General requirements for peer
assessment of conformity assessment bodies and accreditation
bodies**

BNS ISO 17040:2005

Bahamas Bureau of Standards & Quality (BBSQ)
Source River Centre, 1000 Bacardi Road
P.O. Box N- 4843, Nassau, New Providence, Bahamas
Tel: (242) 362-1748 thru 56
Fax: (242) 362-9172
Email: standards@bbsq.bs
Website: www.bbsq.bs



Website: www.bbsq.bs

© BBSQ – All rights reserved. No part of this publication is to be reproduced without the prior written consent of BBSQ.

ISBN 978-976-8268-13-6

NOTICE

Standards are subjected to periodic review.

The next amendment will be sent without charge if you return the self-addressed label. If we do not receive this label we have no record that you wish to be kept up-to-date. Please note amendments are not exclusive of a revision of the document.

Our address:
Bahamas Bureau of Standards & Quality (BBSQ)

Source River Centre
1000 Bacardi Road
P.O. Box N- 4843
Nassau, New Providence
Bahamas

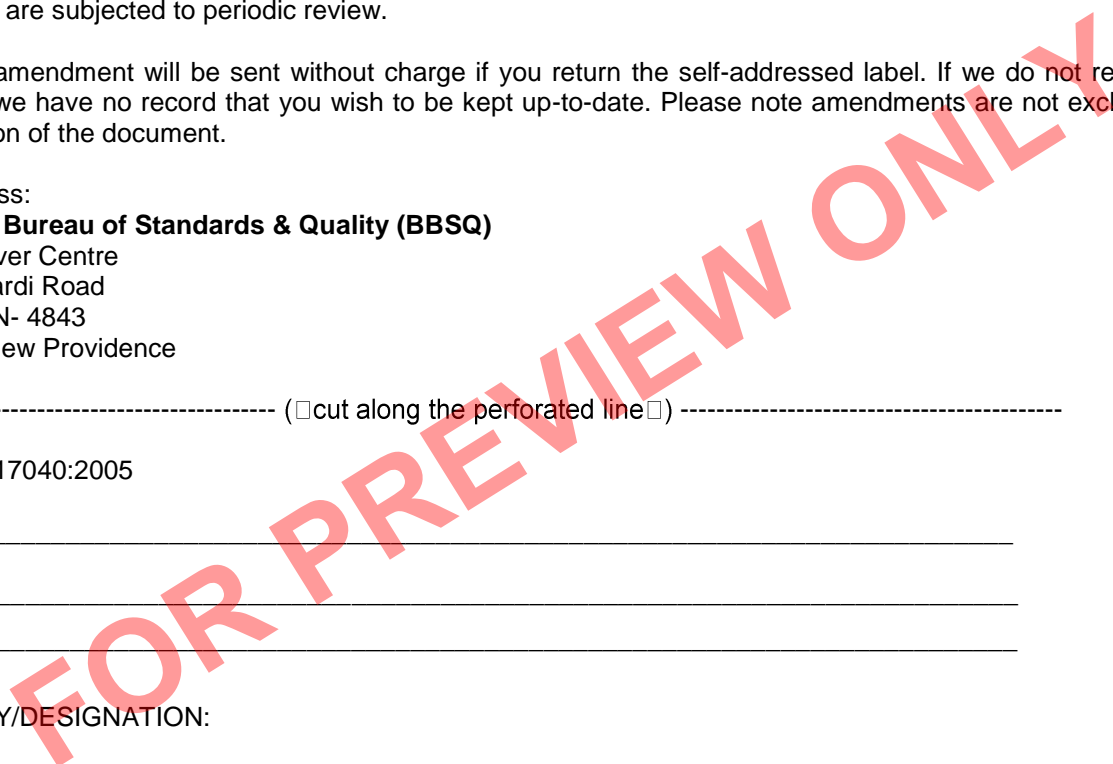
----- (□cut along the perforated line□) -----

BNS ISO 17040:2005

NAME: _____

COMPANY/DESIGNATION:

ADDRESS:



AMENDMENTS ISSUED SINCE PUBLICATION

AMENDMENT NO.	DATE OF ISSUE	TYPE OF AMENDMENT	NO. OF TEXT AFFECTED	TEXT OF AMENDMENT

FOR PREVIEW ONLY

ATTACHMENT PAGE FOR BNS AMENDMENT SHEETS

FOR PREVIEW ONLY

FOR PREVIEW ONLY

BBSQ Foreword

This national standard is identical with the English version of International Standard ISO 17040:2005, **Conformity assessment— General requirements for peer assessment of conformity assessment bodies and accreditation bodies**. The national committee responsible for reviewing this standard is Technical Committee 13 *Conformity Assessment*. This standard contains requirements that are relevant for The Bahamas.

BBSQ Committee Representation

This ISO International Standard was adopted as a National Standard under the supervision of the National Technical Committee for Conformity Assessment (NTC 13) hosted by the Bahamas Bureau of Standards and Quality which at the time comprised the following members:

Member	Representing
Dr. Ismae Whyms (Chairperson)	Princess Margaret Hospital
Mr. Raymond Baillou (Vice Chairman)	QALS Partners
Mr. Lindy Hall (Technical Secretary)	Ministry of Works
Mr. Nathaniel E. Lloyd (Technical Secretary)	Royal Bahamas Police Force Forensic Lab Biology Unit
Ms. Bria Dean (Recording Secretary)	Antiquities and Museums Corporation
Ms. Patrice Nairn (Recording Secretary)	Premier Clinical Lab
Mr. Brian B. Beneby	Water & Sewerage Corporation
Ms. Sybil Bullard	BAMT
Ms. Margaret Daxon	Diabetes Education on the Move
Ms. Deborah Deal	BCCEC
Ms. Bernadette Ellis	Health Professions Council
Dr. M. Anthony C. Frankson	University of the West Indies School of Clinical Medicine and Research Bahamas
Ms. Alexandra Hall	Higgs & Johnson
Dr. Raveenia Hanna	Bahamas Agriculture and Marine Science Institute

Dr. M. Isaacs	Department of Agriculture
Ms. Renee Johnson	Bahamian Touch Products
Ms. Tyrhonda Knowles	Department of Information Technology
Mr. Andre A. Moss	Sun Oil Engineering – Projects
Dr. Patrizia Pasini	N/A
Mrs. Erika Perpall	Department of Information Technology
Ms. Kendra Pratt	Department of Information Technology
Mr. Olsen J. Smith	Water & Sewerage Corporation
Ms. Jaime Strachan	Registrar General's Office
Ms. Avis Richardson	Food Technology and Safety Laboratory (FSTL)
Mr. Edwin Yuklow	Ministry of Works
Ms. Eunae Wright	Antiquities, Monuments and Museums Corporation – Accounts
Mrs. Veronica Ferguson	Royal Bahamas Police Force – Scientific Support Services
Ms. LoAnn Johnson	Department of Environmental Health
Mr. Wellington Ferguson	The National Insurance Board – Health and Safety Management

FOR PREVIEW ONLY

Contents		Page
Foreword.....		vii
Introduction		viii
1	Scope	1
2	Normative references	1
3	Terms and definitions	1
4	Structural requirements	1
5	Human resource requirements.....	2
5.1	Qualifications and selection.....	2
5.2	Languages — translation	2
6	Information and documentation.....	2
7	Peer assessment process requirements.....	3
7.1	General.....	3
7.2	Application for peer assessment or an extension of scope.....	3
7.3	Review and acceptance of the application.....	3
7.4	Preparation for the peer assessment process	4
7.5	Appointment of peer assessment team.....	4
7.6	Documentation review.....	5
7.7	On-site assessment.....	5
7.8	Analysis of findings.....	5
7.9	Peer assessment report	5
7.10	Review of the peer assessment report.....	5
7.11	Peer assessment in support of continuing membership of agreement group.....	6
7.12	Notification of changes.....	6
8	Confidentiality	6
9	Complaints	6
Annex A (informative) Financial aspects		7
Annex B (informative) Assessment techniques for use by peer assessment teams.....		8
Annex C (normative) Information to be included in the peer assessment report		9
Bibliography.....		10

Foreword

ISO (the International Organization for Standardization) and IEC (the International Electrotechnical Commission) form the specialized system for worldwide standardization. National bodies that are members of ISO or IEC participate in the development of International Standards through technical committees established by the respective organization to deal with particular fields of technical activity. ISO and IEC technical committees collaborate in fields of mutual interest. Other international organizations, governmental and non-governmental, in liaison with ISO and IEC, also take part in the work. In the field of conformity assessment, the ISO Committee on conformity assessment (CASCO) is responsible for the development of International Standards and Guides.

International Standards are drafted in accordance with the rules given in the ISO/IEC Directives, Part 2.

Draft International Standards are circulated to the national bodies for voting. Publication as an International Standard requires approval by at least 75 % of the national bodies casting a vote.

Attention is drawn to the possibility that some of the elements of this document may be the subject of patent rights. ISO shall not be held responsible for identifying any or all such patent rights.

ISO/IEC 17040 was prepared by the ISO *Committee on conformity assessment* (CASCO).

It was circulated for voting to the national bodies of both ISO and IEC, and was approved by both organizations.

FOR PREVIEW ONLY

Introduction

Peer assessment has been used for many years as a means of deciding upon whom to admit to a particular group of equals or peers. Membership of a professional institution, for example, can be decided by using a process that the existing members have established, involving the setting of requirements for membership and the assessment of candidates for conformity with those requirements. In the field of conformity assessment, groups of bodies conducting the same type of work, for example testing or accreditation, have used peer assessment in order that the work of each body can be assessed and found acceptable to all the other bodies. The global economy has accelerated the need for mutual recognition amongst accreditation and conformity assessment bodies. Each group has developed a form of peer assessment appropriate to its activities. It became apparent when reviewing the methods used by the different groups that there were many aspects in common. It was felt that there would be benefits in creating an International Standard that gave generic requirements for an effective peer assessment process, while leaving it open to individual groups to adopt specific measures appropriate to their individual fields of activities.

This International Standard is intended to be used by groups of peers performing any conformity assessment activity (e.g. conformity assessment bodies, accreditation bodies). Such groups of peers have been described in various ways, and are called agreement groups in ISO/IEC Guide 68. That is not to say that other groups in different fields of work cannot use the peer assessment process. However, such groups would need to adopt suitable organizational and managerial arrangements to provide the right conditions for the peer assessment process to be carried out to the best effect. As a result, each group can achieve its desired outcomes with the expenditure of less resources.

This International Standard is also intended to enhance the confidence of those who use or depend upon the results of conformity assessment that the work is being conducted in a competent and proper manner.

In this International Standard a generic peer assessment process is illustrated in Figure 1.

The model shown in Figure 1 separates aspects of the peer assessment process that are covered in this International Standard. It starts with the presumption that there is a prospective applicant to join an agreement group. It is assumed that an agreement group exists, and that this group has some criteria or requirements that have to be met in order for a body to join. These aspects are not covered by this International Standard but are for the specific agreement group to decide for themselves, as are the decision on membership of the group and any appeal on that decision. The bulk of this International Standard focuses on the steps to be used within the peer assessment process, and only makes non-process requirements where absolutely necessary. It can be used in conjunction with ISO/IEC Guide 68, and for the peer assessment process that may be required in either regulatory or voluntary fields of conformity assessment.

The nature of a peer assessment is determined by the goal of the agreement group and the use to which the outcome of the peer assessment process will be applied. The goal of the agreement group could be one or more of the following:

- a) conformity of bodies with specified requirements;
- b) equivalence of results among bodies;
- c) acceptance of results from one body by other bodies for use in their conformity assessment activities.

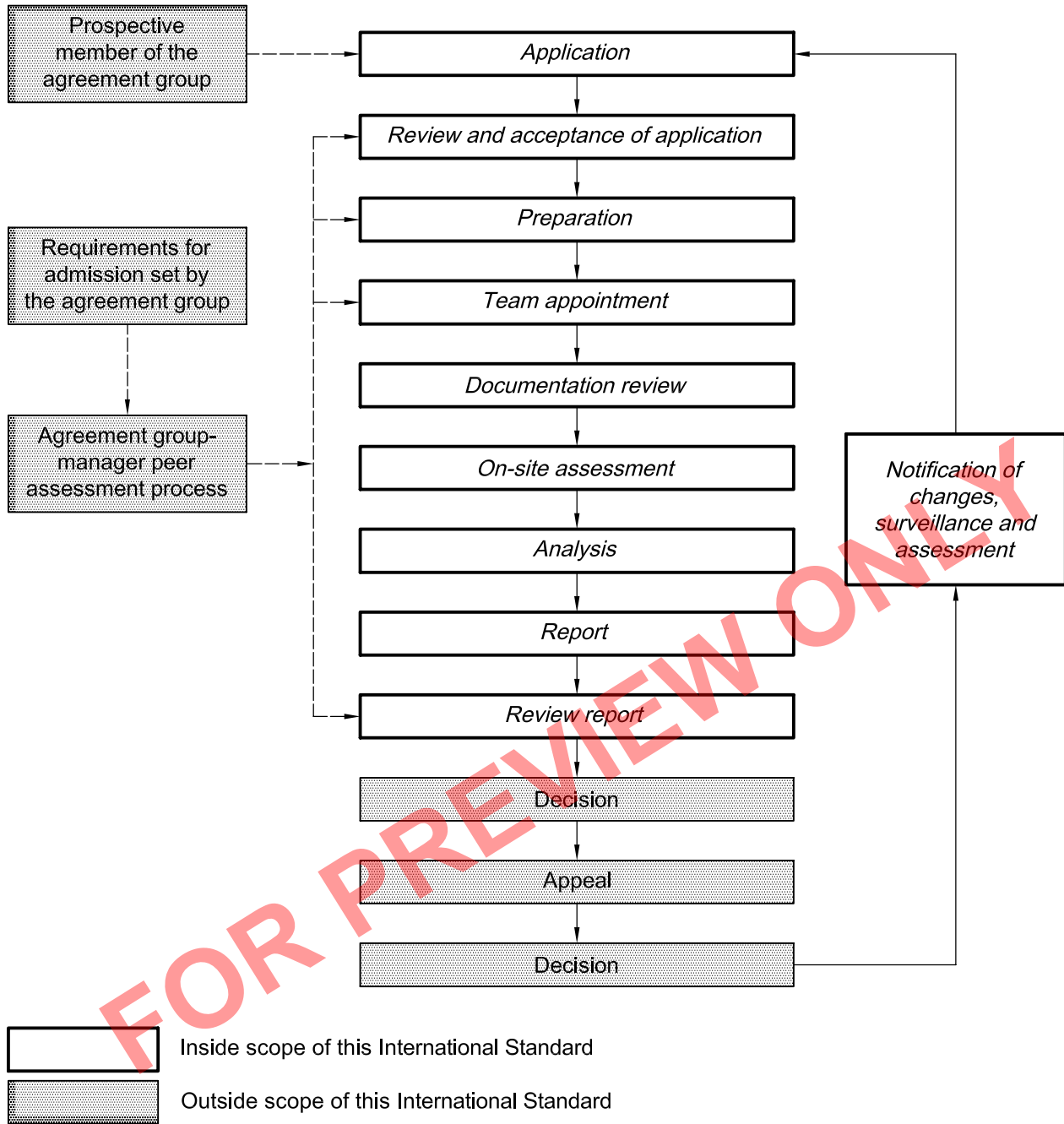


Figure 1 — Generic peer assessment process

FOR PREVIEW ONLY

Conformity assessment — General requirements for peer assessment of conformity assessment bodies and accreditation bodies

1 Scope

1.1 This International Standard specifies the general requirements for the peer assessment process to be carried out by agreement groups of accreditation bodies or conformity assessment bodies. It addresses the structure and operation of the agreement group only insofar as they relate to the peer assessment process.

1.2 This International Standard is not concerned with the wider issues of the arrangements for the formation, organization and management of the agreement group, and does not cover how the group will use peer assessment in deciding membership of the group. Such matters, which could for example include a procedure for applicants to appeal against decisions of the agreement group, are outside the scope of this International Standard.

NOTE 1 Further information on the wider issues is contained in ISO/IEC Guide 68.

1.3 This International Standard is applicable to peer assessment of conformity assessment bodies performing activities such as

- a) testing,
- b) product certification,
- c) inspection,
- d) management system certification (sometimes also called registration), and
- e) personnel certification.

More than one type of activity can be included in a peer assessment process. This can be considered particularly appropriate when the body under assessment conducts combined assessments of multiple conformity assessment activities.

This International Standard is also applicable to peer assessment amongst accreditation bodies, which is also known as peer evaluation.

NOTE 2 Bodies that are members of an agreement group might wish to rely on the soundness of the peer assessment process for evaluating the competence of a peer body as a potential subcontractor.

2 Normative references

The following referenced documents are indispensable for the application of this document. For dated references, only the edition cited applies. For undated references, the latest edition of the referenced document (including any amendments) applies.

ISO/IEC 17000:2004, *Conformity assessment — Vocabulary and general principles*

3 Terms and definitions

For the purposes of this document, the following terms and definitions apply.

3.1

peer assessment

assessment of a body against specified requirements by representatives of other bodies in, or candidates for, an agreement group

[ISO/IEC 17000:2004, definition 4.5]

NOTE 1 “Candidates” are included to cater for the situation where a new group is being formed, at which time there would be no bodies in the group.

NOTE 2 The term “peer evaluation” is used by some groups instead of “peer assessment”.

3.2

applicant

body that is to be the object of the peer assessment process

NOTE The body can be applying for membership of the agreement group or can be an existing member applying for an extension of the scope of its membership. If the peer assessment process is used for continuing assurance of conformity (see 7.10), the term “applicant” refers to the body that is being assessed.

4 Structural requirements

4.1 The requirements of this International Standard are limited to those necessary for the successful performance of the peer assessment process. ISO/IEC Guide 68 provides guidance on other aspects of the operation of the agreement group.